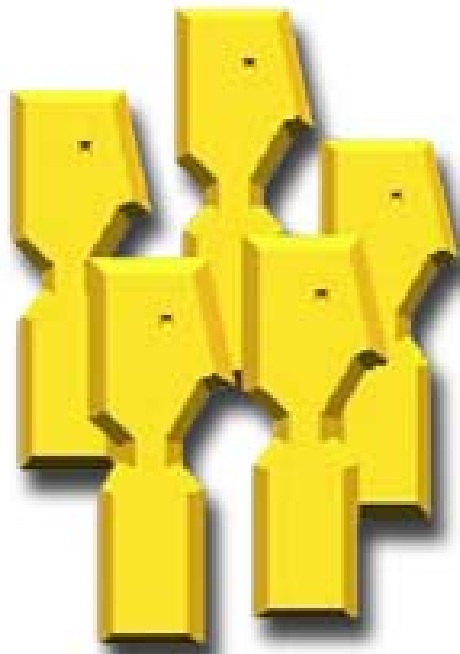


ANNUAL REPORT

2019-2020



Loka Kalyan Parishad

28/8, Library Road, Kolkata - 700 026

Telefax - +91-033-24657107. Phone - +91-033-65291878

Website : www.lkp.org.in

E-mail: lokakalyanparishad@gmail.com

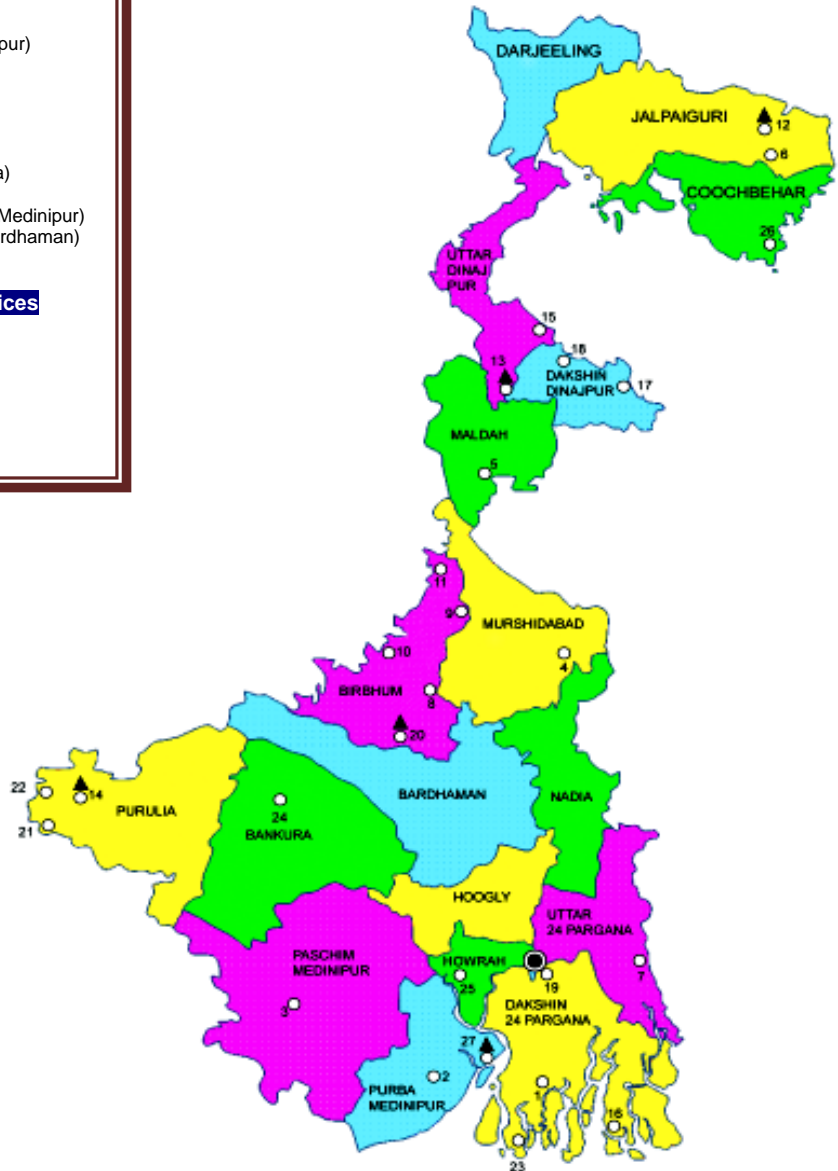
Project Areas of Loka Kalyan Parishad

1. LKP Project Office (Kalchini, Alipurduar)
2. LKP Project Office (Matigara, Siliguri)
3. LKP Project Office (Itahar, U.Dinajpur)
4. LKP Project Office (Harirampur, D. Dinajpur)
5. LKP Project Office (Kotshila, Purulia)
6. LKP Project Office (Bolpur, Birbhum)
7. LKP Project Office (Labpur, Birbhum)
8. LKP Project Office (Illambazar, Birbhum)
9. LKP Project Office (Rajnagar, Birbhum)
10. LKP Project Office (Madhukunda, Purulia)
11. LKP Project Office (Sindri, Jharkhand)
12. LKP Project Office (Kharagpur, PaschimMedinipur)
13. LKP Project Office (Kanksa, Paschim Bardhaman)
14. LKP Project Office (Haringhata, Nadia)

Loka Kalyan Parishad (LKP) Offices

● HEAD OFFICE, KOLKATA

▲ PROJECT OFFICES



FOREWORD

We have the honor to present the Annual Report of our organisation that is Loka Kalyan Parishad for the year 2019-2020. The Annual Report contains institutional details about the LKP, its vision, missions, organizational structure etc. This apart, this report will give an overview of the activities of all the Projects implemented by LKP. The objectives of the Projects, strategies adopted for implementation, physical achievements and other relevant information have been discussed for information of the interested readers.

Little could we realize that the shadow of disastrous pandemic which started spreading during the end the year under report, would have so devastating results causing untold sufferings to all of us. While this is not the right place to discuss all these, we just wish to mention that the threats of pandemic started impacting movements, functioning and other normal activities during the closing months of the year and that undoubtedly hampered our achievements.

If the interest readers need any clarification, further details, or have any suggestion in respect to the issues discussed in the report we would welcome the same.

We conclude with our deep sense of gratitude to all concerned who helped LKP carry on with the responsibilities it under took in the interest of poor and disadvantaged section of the society.

Amalendu Ghosh
Secretary.

Prof. Sankar Kumar Sanyal
President.

September, 30, 2020

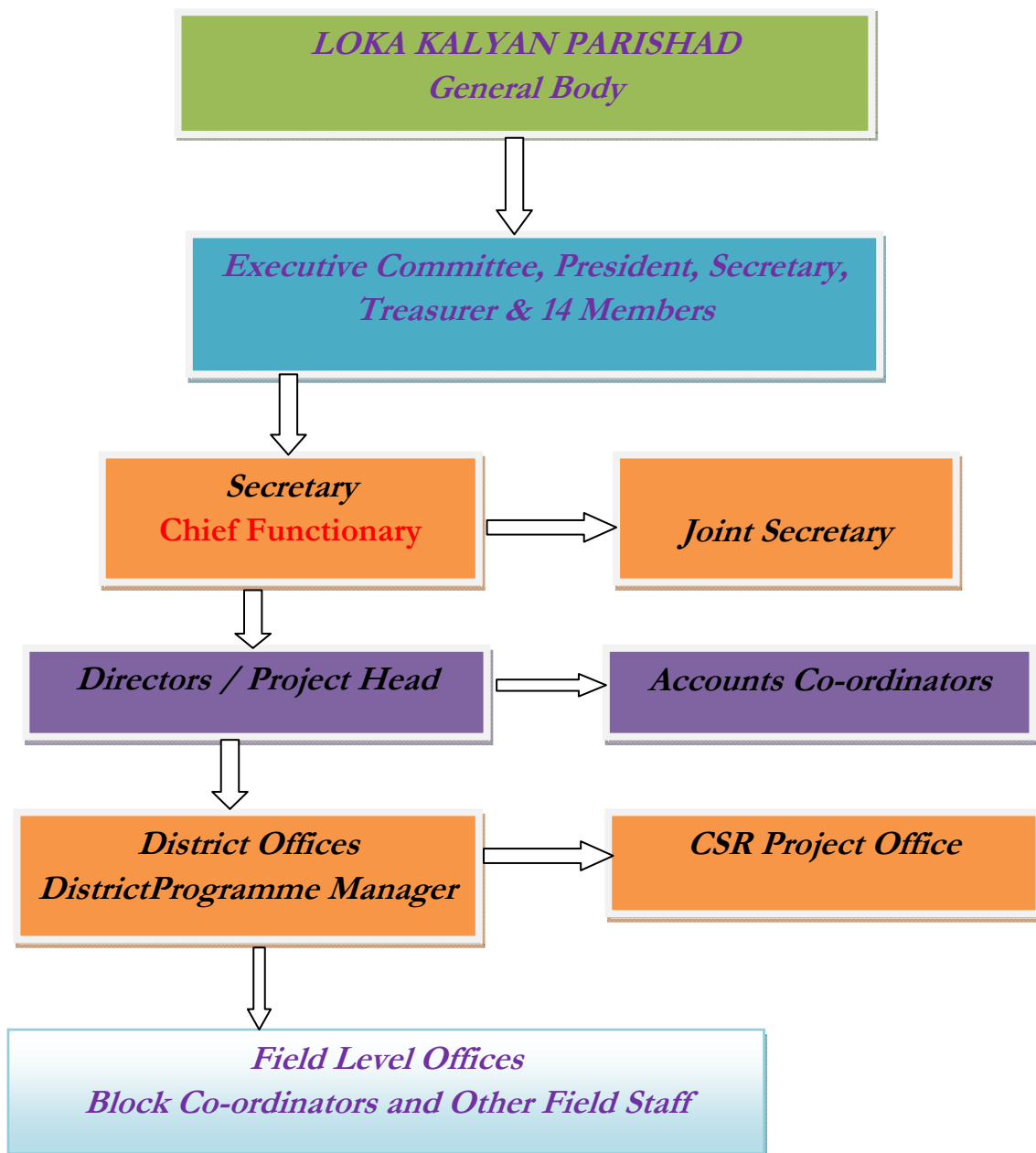
A. INTRODUCTION

1. The Organization:

Loka Kalyan Parishad (LKP), a non-profit making voluntary organization was established in 1977, with Sri Shankar Prasad Mitra, former Chief Justice of Calcutta High Court, as its President. Several respected educationists and social workers were among the founding members like Sri Sudhangshu Kr. Chakraborty, IAS (Rtd.), and former Vice Chancellor of the Rajendra Agricultural University and also recipient of the 'Padmashree' award for his work with small farmers in the Gandak / Kosi project in Bihar, Sri Narendra Nath Sen, Ex-Member-Secretary of the West Bengal State Planning Board; Sri Akshay Kumar Koley, eminent industrialist. Smt. Sumana Chakraborty a dedicated social worker and 13 others. Loka Kalyan Parishad remains always is concerned with the most disadvantaged section of the people of the rural areas and has been working for their uplift through decentralized Natural Resource Management and working in tandem with the rural local self governments or Panchayati Raj Institutions.

Loka Kalyan Parishad was registered under the *Societies Registration Act, 1961*. Subsequently it obtained exemptions under Sections 12A and 80G of the *Income tax Act*. It obtained the unique ID Registration No. - **WB/2009/0015010** from Planning Commission, Govt. of India and subsequently enrolled with the NGO Darpan under ID number **WB/2009/0015010**

2. The Organizational Structure:



3. Loka Kalyan Parishad's VISION, MISSION and STRATEGIES:

Our Vision:

LokaKalyanParishad envisages a world where people are at the centre of governance and development. Powers, responsibilities and functions move from the community outwards only on the basis of necessity through concentric circles of tiers of governance, from the local through the state to the national.

Our Mission:

LokaKalyanParishad believes that the 73rd and 74th amendments of the Constitution provide the pathway to achieve its vision. Therefore LKP strives to ***strengthen local self governance institutions*** as ***catalysts*** to become inclusive, participatory, just and efficient institution of people to provide basic infrastructure that supports the production and distribution of food, primary health facilities and basic education (including other infrastructures) and provide a forum for community groups (SHGs; farmer cooperatives).

Our Objectives & Strategies:

- ❖ Ensure food and livelihood security to the underprivileged families of the rural areas by empowering them through decentralized natural resource management.
- ❖ Community development in the areas of poor physical and economic condition and improving community based service provision that will eventually upgrade people's lives and opportunity.
- ❖ 'Capacity Building' of Panchayati Raj Institutions and their Functionaries, so that they can serve the people better and also continue the kind of assistance given by LKP after its withdrawal.
- ❖ Persuasion of Advocacy, Gender and Human Resource development policies.

With these objectives in view our strategies have been:

- (i) Women of the most disadvantaged families residing in the backward areas of the state will be our primary targets for intervention.
- (ii) These women are then mobilized in Self Help Groups (SHG), which are federated later at the Gram Sansads, Gram Panchayats and Block levels. Their capacities are enhanced.
- (iii) Mutual cooperation is developed among the Panchayats, SHGs and LKP in the project areas.
- (iv) Local natural resources are identified irrespective of their ownership and wherever possible SHGs are tagged with those resources for their best uses.
- (v) People along with the local CSOs, are oriented and made aware of their rights and entitlements under different programmes of the government.

- (vi) Work for institutional development of the PRIs to enable them to discharge their duties better
Documentation, Publication and Dissemination of the organisation's initiative.

4. Project Area of Loka Kalyan Parishad:

Gram Panchayats in Districts:

District	Block	No of GPs	Project (s)
Alipurduar	Kalchini	11	MKSP
Darjeeling MahakumaParishad	Matigara	5	Partnership
Uttar Dinajpur	Itahar, Goalpukur-I	13	MKSP
DakshinDinajpur	Harirampur, Banshihari	11	MKSP, Partnership
Birbhum	Lavpur, Illambazar, Maureswar-I , Md. Bazar , Rajnagar&Khoirashole	46	MKSP,ADMI &IWMP
Nadia	Haringhata	8	Partnership
Purulia	Jhalda –II, Joypur, Saturi, Para &Balarampur&Neturia	31	MKSP, Spl. Proj of BOSE Institute, IWMP, CSR, ADMI, UM-BRLF
PaschimBardhaman	Kanksa, Jamuria, Pandabeshwar, Durgapur- Faridpur, Baraboni, Andal	34	UsharMukti (BRLF) Project
Jharkhand	Sindri	2	CSR
TOTAL: 7 Districts in WB and 1 in Jharkhand	19 Blocks	112	

Municipalities in Districts:

District	Municipality	No. of Wards
Birbhum	Dubrajpur, Nalhati&Rampurhat	31
PurbaBardhaman	Guskara	16
DakshinDinajpur	Buniadpur&Gangarampur	14/18
Uttar Dinajpur	Dalkhola	16
Nadia	Haringhata& Coopers' Camp	17/13
Murshidabad	Dhulian&Beldanga	21/14
Hooghly	Tarakeswar&Dankuni	15/21
PaschimMedinipur	Chandrakona&Jhargram	12/18

5. Report on Programmes Implemented by Loka Kalyan Parishad:

Major programmes which are now being implemented –

- 5.1 Mahila Kishan SashaktikaranPariyojana (MKSP),asub-component of NRLM.
- 5.2 Integrated Watershed Management Programme (IWMP)/Pradhan Mantri Krishi Sinchon Yojana
- 5.3 Corporate Social Responsibility (CSR) Collaborative Project with ACC Ltd.
- 5.4 Ushar Mukti-BRLF Project.
- 5.5 Social Mobilisation and Institution Development Project of SUDA/DAY-NULM
- 5.6 Model Partnership Project Under WBSRLM
- 5.7 Accelerated Development of Minor Irrigation.
- 5.8 Skill Development under Utkarsha Bangla Project.
- 5.9 Special Programme for Schedule Caste under Bose Institute.

5.1. Mahila Kishan Sashakti karan Pariyojana (MKSP 2013-2019):

5.1.A: Background

This is a programme of the NRLM implemented with the assistance of the WBSRLM. Nearly 33% of the agricultural labourers in India are women and more than 80% of the economically active women are engaged in agriculture and allied activities. Thus participation of women are enormous and yet they are not recognized as farmers and are left out of various services provided by the government for the farmers. This Project was envisaged by the NRLM to rectify the situation by recognising these women as farmers.

5.1. B: Objective:

The main objective of the project was to recognize these women as farmers. This required empowerment of the women farmers through enhancement of their income and awareness generation. These would enable them to avail of the advantages of various government schemes meant for farmers.

5.1. C: Strategies:

- i. Mobilisation of women members of the family into Self Help Groups (SHGs) and subsequently federating them at the village, Gram Panchayat and Block level.
- ii. Capacity building of these women for creation of sustainable livelihood opportunities based on community managed Decentralized Natural Resource Management (DNRM) and sustainable agricultural practices.
- iii. Address the Food and Nutrition Security issues at the household level by raising their income level through enhancement of production and productivity.
- iv. Promotion of Farmers' Producers' Group to be later converted into Women Farmers' Producers' Companies for marketing their products.
- v. Institutional strengthening of the Sub-clusters, Clusters and Federation of the SHGs to enable them to carry on the activities initiated under this Project.

The Project envisaged covering 60000 women farmers from so many families. The Project area covered 50 Gram Panchayats of 11 Blocks within 5 districts (Alipurduar, Uttar Dinajpur, Dakshin Dinajpur, Birbhum and Purulia) in the state of West Bengal.

5.1.B: Physical Progress made under the Project:

The work commenced with the signing of MOU in 2013. Though the work was supposed to be completed by 2016, it continued till December 2019. The reasons of time over run were: delay in releasing funds, general elections to the Panchayats (2018), Legislative Assembly (2016) and the Parliament (2014) and also modifications of outputs among others which were beyond our control.. However the Project cost remained the same. Given below the activity-wise physical achievements under the Project. It may be

seen that we successfully accomplished our Project targets, including those which were added at the later stages of the Project implementation.

5.1.B.I : Institution Building:

The primary action point of this Project was to mobilise the women of the farmers' families into Self Help Groups (SHGs) and federates these groups into "Upa-sangha" at the village level, "Sangha" at the Gram Panchayat level and finally into Federation at the Block level. Physical achievement in this respect over the project period has been shown below:-

Table 1: Village, GP & Block level federations

Particulars	Upto March'2019
SHG covered	5900
No. of Mahila Kisans	61109
No. Sub cluster/Village Level Federations	655
No. of Cluster/GP Level Federations	49
No. of Block Level Federations	5

The targets for Institution building had been achieved by 2018

5.1.B.2: Capacity Building initiatives:

5.1.B.3: Sustainable Agriculture(SA) based livelihood development :LKP Best Practices

MKSP focuses on livelihood development of the Mahila Kisans (MKs) based on environment friendly sustainable agricultural practices and allied activities. In fact, in all its activities LKP over the last three decades, has promoted the local natural resource based livelihood initiatives and this was pursued in this project as well. Target women farmers easily adopted these practices and followed the same. The table below shows the number of MKs engaged in different kinds of environment friendly livelihood activities.

Table 2: Present scenario of SA practices

Sl. No.	Particulars	Achievement during 2019-20	Achievement since inception
1.	Home Nutrition Garden	2575	60958
2.	Community Nutrition Garden	0	22144
3.	Group based seed bank	0	13948
	Group based grain bank	0	10942
4.	School nutrition garden	0	3056

5.	Soil Health Improvement (FYM, NADEP/ Vermi, liquid fertilizers, Green manures, legumes etc.	9221	60958
6.	Soil moisture conservation (Pitcher Irrigation, Bio Mulch, Poiria Cropping etc.)	7504	38340
7.	Bio pest management	3000	49167
8.	Bio diversity enhancement(Introduction of new crop, agro forestry, Fruit vegetable nursery	0	24750
9.	Pond based Integrated farming	0	5723
10.	Livestock/small ruminant development	0	57640
11.	System approach(SRI, SWI, SMI etc)	11629	28110
12.	Mushroom cultivation	0	10640
13.	Common Property Resource Management	0	24488

5.1.B.3: Access to land and water bodies: *LKP's partnership approach*

More than 89% percent of target MKs under the project was landless. Efforts had been made to make as much as possible additional land and water bodies available for them to boost their livelihood activities. At the end of the Project it is found that a modest 40% of them (60000 MKs) gained access to additional land and water bodies. It has been possible following LKP's one of the best practices of Pvt- Pvt & Pub-Pvt partnership approach. MKs under this project cultivate about 18950 ha. of agri. land of which about 4921 ha. is private land taken on lease.

5.1.B.IV: Bottom up Planning:

One of the best evidence of participatory democracy at the levels of the rural local self governments or Panchayats is the bottom-up planning for the PRIs this implies preparation of the development plan by the people themselves. Under MKSP, LKP ensured that activity plans of each SHG formed by MKs were prepared by themselves and get them incorporated to the extent possible in the Gram Panchayat Development Plan (GPDP). Success to a great extent was achieved, which will be seen from the table below.

The practice ensued two things, one, GPDP was more pragmatic meeting the needs of the local women and two, convergence with other departmental schemes and leveraging funds from them.

Table 3: Bottom up planning : Participatory Democracy

2013-14	2018-19	2013-14			2019-20		
Participation of MKs		No. of Plans					
		Sub miss ion	Incorpora tion	% of incorpor ation	Submis sion	Incorpor ation	% of incorporation
19733(65 %)	46389 (76%)	1224 4	7569	61.82	33940	27511	81.06

5.1.B.V: Convergence:

As discussed in the earlier paragraph, incorporation of the MK SHG plans into the GPDP has made it possible to converge MKs' activities with various schemes of many government departments, like Agriculture, Horticulture, Animal Resources Development Dept., Fisheries etc. Total amount leveraged during the project period due to such convergence has been shown in the Table below.

Table 4: Convergence scenario

Table 3.7.1: Benefits from line departments

Department	2013-14(Rs.)			2019-20(Rs.)			Increase (%)
	MK(No.)	Benefit (Rs.in Lakh)	Benefit per MK(Rs.)	MK(No.)	Benefit (Rs.in Lakh)	Benefit per MK(Rs.)	
Agriculture	5090	19.37	380.43	18854	626.54	3323.12	773.51
Horticulture	4836	10.12	209.38	9191	106.30	1156.62	452.39
WBCADC	1612	17.78	1103.24	18478	266.05	1439.85	30.510
Fishery	3041	3.14	103.28	8056	100.53	1247.93	1108.28
ARD	7871	15.80	200.67	50259	150.31	299.08	49.04
MGNREGA	8643	540.70	6256	29872	3920.67	12943	14.18
Others	1141	0.65	56.79	6318	147.00	232.526	309.43
TOTAL		607.56			5317.40		

5.1.B.VI: Social Capital Development:

As a direct result of the capacity building programmes under the MKSP, an army of about 650 persons mostly women have emerged as important social capital. These personnel are trained in sustainable agriculture practices, fisheries, small animal rearing, horticulture, SHG formation and management etc. they have been trained in the Institutions like, KVKs, BCKV, WBCADC, UBKV, BRAIPRD, NIRD, BIRD and LKP itself. They are capable to guide and advise the , SHGs farmers independently. It is a matter of pride for LKP that more than 100 such trained personnel have been inducted by the WBSLRM in their programmes.

5.1.C: Financial Inclusion under MKSP: At a glance;

The Project has also helped a large number of women of the farmers' families to come under the formal banking system. The following table will show how important the Project has been in this respect.

Table 4: Financial Inclusion

Table 3.3.1: Source wise Availability of Fund by MKs								
Source of fund	2013-14				2018-19			
	Fund received Rs. in Lakh	No. of SHGs	Fund received per MK(Rs.)	% on total SHG covered	Fund received Rs. in Lakh	No. of SHGs	Fund received per MK(Rs.)	% on total SHGs covered
RF	265.62	2354	1100	79	402.37	3158	1300	54
CIF	154.5	634	2400	21	1426.60	2596	5500	44
Bank loan	2105.76	2108	10000	71	6655.60	4463	14900	76
Total(Rs.in lakh)	2525.88				8484.57			
No. of SHG covered	2980				5900			
Fund per SHG(Rs. In Lakh)	0.85				1.44			
Fund per MK	0.085				0.144			

5.1. D: Special Achievements;

Formation of Producer Companies:

Increased productivity and diversification of crops enhanced production of cereals, vegetables, eggs and poultry products etc. to a large extent. Besides these some value added products like 'muri' (puffed rice), spices and other consumables, even non-agri products like 'Katha' are also being produced. While there is no marketing problems, to ensure better prices LKP took initiative to form Producers' by our target Nahila Kisans Groups first then convert some of these into Producers' companies. At present five Mahila Kishan Producers' Companies and one Cooperative Society have been functioning. It may be noted this particular activity was not mentioned in the DPR. Due to late release of fund remaining five Producers' Companies could not be formed.

➤ Production of Quality Seeds: A) New Milestone:

Availability of quality seeds be it for paddy, or pulses or vegetables has remained an important constraint for poor Mahila Kisans who cannot afford to buy them from the market. LKP took up the programme and encouraged the MKs to produce their own

seeds in scientific manner and sell the surplus in the market to earn additional income. About 130 MKs of Ilambazar, Lavpur, Jhalda-II Blocks are involved in the process. Mahabir Sangha of Lavpur (Birbhum) has obtained Seed Growers' license from govt. of W. Bengal.

➤ Interim Review and Third Party Assessment:

NIRDPR, Hyderabad conducted an intensive Interim Review on MKSP activities in our area of implementation. Activities, both physical and financial, were scrutinized thoroughly during a weeklong study. The National Resource Person (NRP) visited the field areas of Birbhum and Purulia and interacted with MKs and also visited HQ to verify the financial transparency. He was satisfied with our best practices in field as well as in HQ level. NIRDPR submitted a detailed report and appreciated LKP's work in all respects. A Third party Assessment was also conducted by Jalpaiguri Vivekananda Education Society, Regional Council, PKVY project, Govt. of India. The report was submitted to MoRD as well as the WBSRLM profusely appreciating the quality of work done by LKP.



5.2. Integrated Watershed Management Programme (IWMP) / Pradhan Mantri Krishi Sinchon Yojana:

Integrated Watershed Management Project or the IWMP which has since been renamed as Pradhan Mantri Krishi Sinchon Yojana was planned for management of surface water and underground water resources including harvesting thereof in water scarce areas of the state. Objective was to ensure conservation and judicious use of available water resulting in increase in agriculture productivity thereby enhancing the livelihood opportunities. Out of three Projects assigned to LKP the Project number IWMP-3, Tantipara, (Batch-III), Rajnagar Block, Birbhum District has been foreclosed with effect from March 31, 2019. Two remaining Projects were under implementation during the year under report.

Following three Projects were sanctioned by the State Government to be implemented in five years.

SL No.	Name of the Project	Year of sanction by State Government	Sanctioned Amount (Rs. in Crore)	Treatable Area (In Ha)	Nos. of Moujas
1.	IWMP-3, Tantipara, (Batch-III), Rajnagar Block, Birbhum District	2012-13	4.80	4000	24
2.	IWMP-5, Rajnagar, (Batch-IV), Rajnagar Block, Birbhum District	2013-14	4.80	4000	17
3.	IWMP-14, Garaphushara, (Batch-IV), Joypur Block, Purulia District	2013-14	5.85	3900	37

5.2.2 IWMP-3/ 2011-12 (Batch-III), Tantipara, Birbhum:

(Project has been closed by Govt. W.E.F 01.04.2019.)

5.2.3 IWMP-5/ 2012-13 (Batch-IV), Rajnagar, Birbhum:

Physical Progress under this Project is given below:

Sl. No.	Success Indicator	Unit	Target for the whole project period	Achievement during 2019-20	Total Achievement since inception as on 31.03.2020
1.	Creation of new Rainwater Harvesting Structures	Number	134	18	44
2.	Additional area brought under irrigation	Ha		19	59
3.	Plantation including afforestation & horticulture	Ha	4.00	0.26	1.26
4.	Formation of Self Help Groups (SHGs)	Number	39	0	42

Sl. No.	Success Indicator	Unit	Target for the whole project period	Achievement during 2019-20	Total Achievement since inception as on 31.03.2020
5.	Formation of Users Group (UGs)	Number	88	10	31
6.	Providing livelihoods to households & support under PSME	Number	1529	698	11763
7	Number of training conducted including exposure visit	Number	330	4	227
8.	Persons trained		8797	36	3455
9.	Employment Generation (also indicate SC/ ST/ Women/ Men)	Person days		10	2720

NB:

5.2.4 IWMP-14/ 2012-13 (Batch-IV), Garaphushara, Joypur, Purulia:

Physical Progress under this Project is given below:

Sl. No.	Success Indicator	Unit	Target for the whole project period	Achievement during 2019-20	Total Achievement since inception as on 31.03.2020
1.	Creation of new Rainwater Harvesting Structures	Number	115	3	17
2.	Additional area brought under irrigation	Ha		5	44.5
3.	Plantation including afforestation & horticulture	Ha	9.892	0	1.5
4.	Formation of Self Help Groups (SHGs)	Number	31	0	31
5.	Formation of Users Group (UGs)	Number	64	0	19
6.	Providing livelihoods to households & support under PSME	Number	2965	20	14741
7	Number of training conducted including exposure visit	Number	963	0	969
8.	Persons trained		15718	0	16154
9.	Employment Generation (also indicate SC/ ST/ Women/ Men)	Person days		0	5300

5.2.5. *The statement below will show the fund utilization position in brief.*

Sl. No.	Project	Sanctioned Cost (Rs. Lakh)	Fund released in 2019-20 (Rs. Lakh)	Fund received as on 31.03.2020 (Lakh Rs.)	Amount Spent as on 31.03.2020 (Lakh Rs.)	Remarks
1.	IWMP/5	526.00	71.90	182.07	159.56	
2.	IWMP/14	609.00	0.080	79.77	68.35	

The statement are self explanatory. Had the fund flow been regular much more work could be done. It may be observed that only 28% of the project cost has been released over the last five years in IWMP-5, whereas only 7% fund released in IWMP-14. These account for poor physical achievement under these project.



5.3. Corporate Social Responsibility Programme:

In 2012 M/s ACC Ltd. approached Loka Kalyan Parishad to take up development activities around their Damodhar Cement Works at Madhukunda, Purulia, in discharge of their Corporate Social Responsibility. Accordingly the Project DISHA was launched. Two phases of the said Project have been implemented and the same is in its third phase. The Company assigned the similar responsibility at Sindri, Jharkhand where the first phase of the work stated in 2016, under the name of SWABALAMBAN and now in its second phase. LKP has been implementing the work as per the agreed work plan to the satisfaction of the plant authorities.

5.3.1 Physical achievements – plant-wise – are given below:

Damodhar Cement Works, Madhukunda, Purulia:-(cumulative achievement of the second phase (DISHA) ending on 31-03-2020). The Project was limited to 6 villages identified by the Plant authorities:

Sl No.	Activity/Program	Work done
1	Public Disclosure Campaign on ACC Trust-DISHA Project	6 campaign
2	Bench mark Survey of the adopted villages	1800 HH Survey completed
3	Re- Orientation & Skill updation session for staffs & village volunteers	6 season
4	Adult Literacy - Functional education centre (classes)	15 classes
5	Animal Vaccination Camp	12 camp
6	Social Mobilization of target groups- old & formation of new groups Social Mobilization of target groups- old & formation of new groups	3 SHG
7	Social Mobilization of elderly SHGs (E-SHG) formation of new groups & linkage with PRIs & mainstream development institutions	3 ESHGs
8	Excavation of New Ponds & Re-excavation of existing silted ponds	2 pond(1pond excavated & 1 re excavated)
9	Capacity Building for SHGs	120 Meeting organized
10	Establishment of Mushroom Spawn Production Unit	1 unit
11	Establishment of Agro Service Centre for Tools & Machineries	1unit
12	Establishment of Commercial layer (Chicks & Ducks) poultry unit	120 HH Ducklings support 70 HH Chicks support
13	Development of Poly house/ Green House-Net Shed /Technology for Nursery/ seedling, vegetable production units	2 unit
14	Solid Waste management: Establishment of Commercial production of Vermi-compost unit	4 unit
15	Establishment of Commercial production of 1 Rice/Maize etc. grains puffing unit	1 unit
16	Management of Kitchen/Community garden	320 HH Covered
17	Management practices of Small Domestic	2 day training

	Animals @ 2000/- per day	
18	Farm Pond Health Management	6 pond
19	Management Training on Mushroom Spawn Production Technology	2 training
20	Capacity Building on Fish breeding Technology to produce Fish seeds	2 programme
21	Mother & child health care(health Camp)	1 camp
22	Installation of Pumps for lifting waters in overhead tanks for use in Toilets by Primary schools/I	2 unit
23	Youth Development - Promotion / development of Sports activities in villages by conducting regular training/ coaching , Tournaments like Football/	2 tournament Organized
24.	1425 mask were made by DISHA Team.	

Apart from the above, Capacity Building Programmes were organized for (i)Nursery/Poly-house and Green House management, (ii) Rice puffing operation,(iii) Bio-management and pest control, (iv) Computer Literacy programmes.

5.3.2 Sindri Cement Works (Jharkhand)

Second phase of the project has started from May 2019. This project covers two Gram Panchayats (Chatatand & Birsingpur) areas and two wards of Sindri Municipal Corporation (ward no. 54& 55). Total household covered are 1309 against the target of 1800.

Physical achievements under the Project made have been given below:

1. Skill Development: Farming Activities

Achievement is less considering the Out-break of Covid. (Training includes Hand-holding)

Component	Plan & Target		Achievement	
Skill Development	Training (no.)	Beneficiary to be trained(no)	Training(no.)	Beneficiary trained(no)
Group Management	280	2800	193	1976
Natural Resource Management	85	850	56	630
Skill up Gradation in Farming Practice	230	2300	112	1159
Skill up Gradation in Fishery, Animal & Poultry	70	700	30	319
Production Technique on Vermi Compost & Other Manure	52	520	14	156
Nursery Management	58	580	31	390
Mushroom production & Marketing			15	167
Seed Bank & Grain Bank	34	340	11	129
Training on Organic Farming	29	290	9	104
Total Farm Activities	838.	8380	4715.	5030

Skill Development: Non-Farming Activities

Component	Plan & Target		Achievement	
Skill Development	Training (no)	Beneficiary to be trained(no)	Training(no)	Beneficiary to be trained(no)
Stitching/ Embroidery/ Tailoring	1	20	4	87
Production of Agarbati/ Handcrafts	2	30	3	42
Production of Phenyl/ Detergent	3	90	4	65
Food prevention & Food Production, Tomato/Pulp/Tomato Sauce/ Papad Making/ Lemon Squash/ Mango Squash/ Vegetables Pickles/ Jam etc.			0	0
Puff Rice Production	2	20	2	24
Mushroom Spawn Production	1	10	4	32
Sanitary Napkin Production	1	15	3	23
Total Non-Farm Activities				

2. Other Activities:

Subject	Target	No. of Campus Organized	Members Participated No.
a)Animal Health Check-up & Vaccination Campus	1	0	0
b)Swachh Bharat Abhiyan Campaign	0	0	0
c)Adult Literacy		1	29
d)Sanitation/ Hygiene		10	102
e)Construction & Re-excavation of Water Harvesting Structure	1		1
f)Repairing of Abundant well for People's Utilization	3	0	8
Establishment of Mushroom Spawn Production unit	1	1	1
Establishment of Poultry Feed Production unit	2		0
Establishment of Sanitary Napkin Production unit (contd.)	1		1

We are happy to record that this Project was adjudged the best among all the CSR Projects of the ACC Ltd. in 2018 in the category of Women Empowerment.

5.4. Ushar Mukti-BRLF Programme:

Project is being implemented by a consortium of seven NGOs supported by Bharat Rural Livelihood Foundation (BRLF) and in collaboration with Panchayats and Rural Development Department, Govt. of West Bengal. The basic objectives of the Project are land and soil treatment through water conservation, enhancement of agriculture productivity, bio-regeneration, community asset creation through wage employment, capacity building of the CBOs and CSOs etc. LKP being one of the partners started implementing the Project in 6 blocks of Paschim Bardhaman and 2 in Purulia. But during the year some reallocation of jurisdiction was made in the interest of the Project. The blocks in Purulia were taken out and one named Salanpur in P. Bardhaman was included. Physical achievements under the Project during 2019-20 have been shown below:

Overall Ushar Mukti Progress in 2019-20

Year 2019-20							
Sl. No	Block	Schemes - AAP & DPR Plan			Implementation Status		
		Total Schemes in AAP	Sanctioned Amt.(Lakh)	Total Persondays in AAP	Total no. of Schemes AAP Implemented	Expenditure Incurred (Rs Lakh)	Persondays Generated
1	Kanksa	274	834.1	534695	247	784.92	512140
2	Andal	99	378.3	158256	69	240.89	188696
3	Barabani	58	145.1	62406	33	82.93	73079
4	Durgapur faridpur	461	1890	846806	135	569.92	392040
5	Jamuria	93	260.4	139039	13	32.6	16975
6	Pandabeswar	146	233.4	94625	20	42.26	33379
Total		1131	3741	1835827	517	1753.52	1216309

Intensive block scenario 2019-20 Particular	Plan for 2019-20	Achievement till March'20	% of Ach.
Area treatment in Ha.	2148.41	925.95	43.09%
No. of NRM Activities / Schemes	274	247	90.14%
Financial Expenditure (in Lakh)	834.08	784.92	94.10%
Person Days generation (in lakh)	534695	512140	95.78%

Intensive block scenario DPR 19-20

SL	Description	Total in DPR	FY 2019-20
1	No. of households targeted to provide direct benefits from INRM assets under DPRs:	3058	1463
2	No. of households planned under IGA:	1336	526
3	Area planned for increasing rate of water harvesting / recharging (ha):	559	177.83
4	Forest area planned for INRM (ha):	10	10
5	Afforestation (ha) :	103.04	12.78
6	Irrigation facility increase (ha) :	885.5	459.4
7	High Value Horticulture(ha)	69.65	14.02

Non-intensive block scenario 2019-20

Particular	Plan for 2019-20	Achievement till March'20	% of Ach.
Area treatment in Ha.	2748	733	26.67
No. of NRM Activities / Schemes	857	270	31.50
Financial Expenditure (in Lakh)	2906.88	968.6	33.32
Person Days generation (in lakh)	1301132	704169	54.11

Non-intensive block scenario through DPR 19-20

SL	Description	Total in DPR	FY 2019-20
1	No. of households targeted to provide direct benefits from INRM assets under DPRs:	2833	1296
2	No. of households planned under IGA:	1548	684
3	Area planned for increasing rate of water harvesting / recharging (ha):	704.3	303.5
4	Forest area planned for INRM (ha):	113	63
5	Afforestation (ha) :	351.08	12.78
6	Irrigation facility increase (ha) :	458	48.5
7	High Value Horticulture(ha)	129.28	22

Model watershed scenario 19-20

Block	No. of Model Nano	Total Area of Nano watershed in Ha.	Total Treatable area	% of treatment (March 20)
Kanksa	2	962.2	241.97	5.9
Durgapur Faridpur	4	1716.88	605.71	29.5



5.5: Social Mobilization & Institutional Development

Under

SUDA / DAY-NULM

Loka Kalyan Parishad was empanelled as a Resource Organization for Social Mobilization & Institutional Development of S.H.G.s in urban areas under DAY-NULM in 2017-18 by State Urban Development Mission. In 2017-18, LKP was selected for 4 (four) ULBs, i.e. Dubrajpur and Nalhati in Birbhum, Buniadpur in Dakshin Dinajpur and Dalkhola in Uttar Dinajpur districts.

The functions of the RO under SM & ID, component of SUDA/DAY-NULM as assigned are as follows:

Social Mobilisation of women and formation of Self Help Groups. (ii) Formation of Federation like Institutions of such Groups. (iii) Capacity building of the women and their Institutions. (iv) Financial Literacy and universal Financial Inclusion. (v) Revolving fund Support.

In 2018-19, LKP has been engaged as Resource Organization vide letter no.SUDA-33/2015/2028 dated 28.02.2019 by WBSULM & SUDA for implementing Social Mobilization and Institutional Development(SMID) programme under NULM in 12 (Twelve) ULBs as follows:-

District	Name of the ULB
DakshinDinajpur	Gangarampur
Murshidabad	Beldanga, Dhulian
Nadia	Haringhata,Coopers' Camp
PurbaBardhaman	Kalna,Guskara
Hooghly	Dankuni, Tarakeswar
Birbhum	Rampurhat
PaschimMedinipur	Chandrakona
Jhargram	Jhargram

In 2019-20, M.O.U. was signed with 8(Eight)municipalities namely Gangarampur, Beldanga, Dhulian,Coopers' Camp, Dankuni, Tarakeswar, Guskara and Rampurhat. In the remaining 4 (four) municipalities, M.O.U could not be signed due to various reasons beyond the control of LKP. Of the 8 municipalities, work has been started in 7 municipalities except Coopers' Camp where there has been no progress made so far inspite of continuous attempt by LKP over a period of time. No fund was received in respect of the 7 municipalities during 2019-20 except for Gangarampur. Moreover, unlike the 4 municipalities assigned to LKP in 2017-18, no start-up fund has also been released in respect of the 7 municipalities assigned to LKP in 2018-19. As a result, the remuneration of the field functionaries of the projects except Gangarampur remained almost unpaid during 2019-20. However, in all the projects including the ones previously sanctioned, the target of WBSULM was by and large achieved in 2019-20.

Statement showing Municipality-wise achievements, during 2019-20.

M'pality	New SHG formed	Rev. fund paid	Bank linkage (CC)	Bank Loan recd.	Book Keeping Trag.	ALF Formed	Trg. Of ALF	Functional Lit Camp	Trg. Of Master Trainers
Dubrajpur	45	45	49	49	16	15	15	2	6
Dalkhola	42	136	44	44	04	16	40	06	04
Nalhati	28	44	46	46	10	Already complete	16	02	06
Buniadpur	45	110	96	96	120	14	72	06	04
Rampurhat	80	00	05	05	18	16	16	01	06
Guskara	52	00	00	00	16	14	14	05	06
Dhulian	130	00	00	00	18	15	15	06	02
Gangarampur	82	78	38	38	17	18	00	02	03
Dankuni	30	33	46	46	08	03	07	06	00
Tarakeswar	19	47	37	37	02	04	07	06	00
Beldanga	40	23	15	15	40	00	00	05	06

5.6. Model Partnership Project Under WBSRLM:

In 2016-17 two projects, one in Haringhata in Nadia and the other in Matigara in Darjeeling districts. were awarded to LKP by the WBSRLM for development of models for mobilisation of rural women in SHGs, federate these Groups and empower the women to undertake livelihood activities also to run these federations by themselves. As per the agreement, the project period ended in August,'19 and September, 2019 respectively after a period of 3(Three) years from the month of signing of M.O.U.

After a period of one and a half year from the signing of the M.O.U., the project objectives were revised in 2018-19 by WBSRLM and LKP was assigned to focus only on livelihood activities. L.K.P. facilitated the implementation of the two projects as per the revised mode during the remaining period of the projects. This apart, the previous activities of formation of Groups, capacity building, institutional development, financial inclusion etc. were also facilitated by LKP during the year.

Performance Report of the Projects in 2019-20 up to 31.08.2019 and 30.09.2019 for Haringhata and Matigara respectively:-

	Institution Building			
Block	No. of existing groups before our intervention	No. of new groups formed in 2019-20	No. of defunct SHGs revived in 2019-20	Total No. of active groups as on 31.08.19/30.09.19
Haringhata	1535	66	00	2001
Matigara	1102	18	00	1937

Since inception of the Partnership project in Matigara, LKP has taken up initiatives for training and livelihood promotion of SHG members apart from facilitating the accomplishment of the project objectives. These initiatives were sustained out of own fund of LKP received as fee under the Model Partnership project. Both in Haringhata and Matigara, training and field level demonstration on CMSA were conducted. Goatery scheme was implemented and she/he goats were given to 16(Sixteen) households of SHG members of 5(Five) SHGs in Sisabari and Atharokhai G.P.s. Poultry birds for backyard poultry were distributed to 92 (Ninetytwo) members from 20(Twenty) SHGs in Champasari, Matigara-I & II and Patharghata G.P.s. This was done on the basis of sharing of cost between LKP and the beneficiaries at an overall ratio of around 80:20. The beneficiaries were also provided necessary training by LKP. Seed distribution, kitchen garden, NADEP pit, use liquid organic fertilizer were some other initiatives undertaken by LKP out of its own fund. A mushroom spawn production unit and a mushroom production unit have been set up in Matigara by LKP by utilizing its own fund 2019-20 and those were handed over to SHGs. Necessary training was also imparted for the purpose to the members of the SHGs.

5.7 Accelerated Development of Minor Irrigation (ADMI)

This is a World Bank funded project being implemented by the Govt. of West Bengal titled West Bengal Accelerated Development of Minor Irrigation Project. The objective of the Project is to develop irrigation system in watershed management mode mainly in single crop rain fed areas and thereby enhance agricultural production of small and marginal farmers in the project area.

Loka Kalyan Parishad was chosen as a Service provider to assist the Program Management authorities in identifying the probable locations for development of minor irrigation system, mobilisation of community and strengthening community based organisations so that they can take over the facilities for operation and assist extending agri and agri-based livelihood activities of people within the Project areas. The work started in September 2017 and concluded in December 2019. However a new and revised agreement has been entered into from January 2020. Having completed the recruitment of field staff the work in full swing was started in Sagar and Namkhana Blocks of South 24 Pargana, Joypur and Arsha Blocks in Purulia and Muraroi -1, Nalhati-1 and Rampurhat-1 Blocks in Birbhum district. But the work had to be stopped due to lockdown orders imposed by the government.

5.8 Skill Development Project under Utkarsha Bangla

LKP is an accredited training provider under PBSSD & during the year of the report it imparted three trainings on organic grower and one training on vermin compost Grower is its two training located at Jhalda & Bolpur. A total of 103 trainees mostly women have been trained. We are happy to say that 72 out of 74 trainees came out successful after independent assessment and assessment of rest 29 is pending.

5.9 Special Programme for Schedule Caste under Bose Institute.

This was a special Project meant for Schedule Tribe in Jhalda & Joypur block. More than 200 ST families have been benefitted under this programme, WHO received various input use Chicks, ducklings, kids, goat shed etc. for this livelihood development. The project has since been closed.

Administrative & Financial Report:

6.1. Administration:

LKP has been functioning with its headquarters in Kolkata and field offices at Kalchini, Matigara, Itahar, Harirampur, Bolpur, Illambazar, Lavpur, Rajnagar, Kotshila, Kanksa, Haringhata. Madhukunda and Sindri. 33

The staff strength as on 31-03-2020 under different Projects are shown below:

Sl. No. Project No. of Staff No. CRP Remarks

1. MKSP ---22
2. IWMP ----4
3. CSR -----8 plus 14 (village volunteers)
4. UM-BRLF--- 7

5. SMID-SUDA---- 15

7. ADMI---- 19 –

6.2. Financial Information:

Financial crises do not leave LKP mainly because of late release of fund by the funding institutions. This year also faced problems in implementing the projects and even paying the remuneration to the employees in several programmes particularly, MKSP, SMID-SUDA, ADMI etc. A summary of receipt and expenditure of fund- project-wise, for 2019-20, is given below:

Sl. No.	Project	Fund Received (Rs. In lakh)	Fund spent. (Rs. In lakh)	Remark
1.	CSR—	84.0	97.47	
2.	BRLF (Ushar Mukti)	21.70	26.49	
3.	IWMP----3 ----5	71,79 00.08	54.52	
4.	MKSP	87.73	234.77	
5.	PBSSDM	01.71	1.64	
6.	SMID-SUDA	08.96.	6.68	
7.	ADMI	38.22	21.01	
8.	Partnership Project	20.00	21.34	
9.	CFT		07.86	
10.	Bose Institute		03.77	

7. Miscellaneous:

(i) LKP has continued to bring out the news magazine *Panchayat-O-Amra*”, though the fund crunch has compelled to restrict it to one edition in a month.

ii) Keeping to the tradition, Loka Kalyan Parishad had the opportunity to receive the visitors, monitors, study teams etc. to its action areas to see for understanding the ways how LKP operates in the field for implementation of its programmes and their impact. Particularly the development model of the poorest of the poor through eco-friendly sustainable agriculture practices and empowerment of women farmers have been widely acknowledged by such visitors. Such visits were immensely useful for our workers as well.

iii) LKP with its limited resources and having collected from its members has distributed articles like dhuti, share, pants shirts, winter garments, utensils etc. to the poor families in the project areas.

8. Acknowledgement:

Loka Kalyan Parishad sincerely acknowledges the support and assistance that it received in various forms from many organisations, institutions and individuals. It would not have been

possible to continue its services without those supports. We in the LKP have always tried to meet the expectations of those supporting authorities with sincere and honest endeavors on our part. A few of the authorities/institutions/organisations from whom whole hearted supports have been received are mentioned below:

- Ministry of Rural Development, Govt. of India
- National Rural Livelihood Mission
- Panchayats and Rural Development Department, Govt. of WB
- W.B. State Rural Livelihood Mission
- Agriculture Department , Govt. of WB
- WB State Watershed Development Agency
- Water Resources and Investigation Department Govt. of WB
- State Urban Development Agency
- WB Accelerated Development of Minor Irrigation Corporation
- Bose Institute
- M/s ACC Cements Ltd.(Damodhar Cements Works, Sindri Cement Works)
- DRDC: Darjeeling, Nadia, Alipurduar, Uttar Dinajpur, Dakkhin Dinajpur, Birbhum ,Purulia
- Bharat Rural Livelihood Foundation.
- District Authorities of Alipurduar, Darjeeling, Uttar Dinajpur, DakshinDinajpur, Birbhum, Nadia, Purba Bardhaman, Paschim Bardhaman, Purulia.

ABBREVIATIONS USED

ATI	-	Administrative Training Institute
CB	-	Capacity Building
CBO	-	Community Based Organisation
CSO	-	Civil Society Organisation
CSR	-	Corporate Social Responsibility
DNRM	-	Decentralised Natural Resource Management
DRCSC	-	Development Research Communication & Services Centre
DRP	-	District Resource Person
FS	-	Food Security
GP	-	Gram Panchayat
GUS	-	Gram Unnayan Parishad
HDI	-	Human Development Index
HRD	-	Human Resource Development
IGF	-	Indien Gruppen Fyn
LKP	-	Loka Kalyan Parishad
LRP	-	Livelihood Resource Person
NGO	-	Non - Governmental Organisation
NIRD	-	National Institute of Rural Development
MGNREGA-		Mahatma Gandhi National Employment Guarantee Act
NRM	-	Natural Resource Management
PDIS	-	Panchayat & Development Information Centre
PRDD	-	Panchayat and Rural Development Department
PRI	-	Panchayat Raj Institution
PRRC	-	Panchayat Raj Resources Centre
PS	-	Panchayat Samity
RTI	-	Right to Information
SHG	-	Self Help Group
SGSY	-	Swaarnajayanti Swarozgar Yojanas
BRAIPRD-		Bhim Rao Ambedkar Institute of Panchayat & Rural Development



Never say, 'No'; never say, 'I cannot', for you are infinite. Even time and space are as nothing compared with your nature. You can do anything and everything, you are almighty.

- Swami Vivekananda